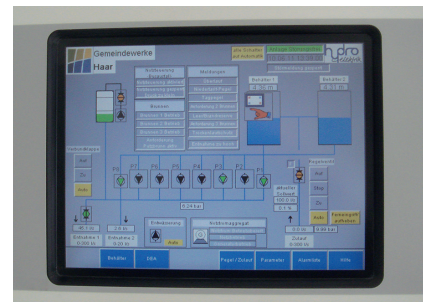




Control technology in a municipal water supply system

Function: System control, visualization and process control system of drinking water supply (2 x HST 1500 with booster pump unit 200 l/s - 6 bar)

City/Country: Haar/Germany



Project info:

System control: EATON XVS series
Visualization: Galileo
Process control system: Flowchief
Year of realisation: 2011
Specialities: Optical fibre network